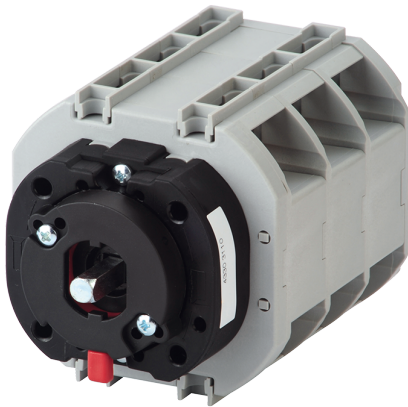


**43204106**

## COMO CS switch body, I-II function, 4P, door mounting, 63A



### Strong points

- Simple installation
- Quick mounting
- Effective in all circumstances

### General characteristics

- Range from 25 A to 100 A.
- Available in 3P or 4P.
- Rear mounting or door mounting.
- Available as stand-alone switches or enclosed.

### Compliance with standards

- IEC 60947-3
- UL 60947-4-1

### Link to the reference

COMO CS are manually operated multi-pole transfer switches. They ensure switching, transfer of sources or transfer of two low voltage circuits on load as well as their safe disconnection.

### Certificates and Declaration

Conformity to standard #1	UL60947-4-1
Conformity to standard #2	CSA-C22.2 No. 60947-4-9
Conformity to standard #3	IEC 60947-3
Proposition 65 California	WARNING This product can expose you to chemicals including Styrene, which is known to the State of California to cause cancer. For more information go to: <a href="http://www.P65Warnings.ca.gov">www.P65Warnings.ca.gov</a>

### Standards

Conformity to standards	IEC UL
-------------------------	------------

### Certificates and Declaration - Safety

UL file number	E237502
----------------	---------

### Technical Characteristics

Length of the product unit [mm]	74
Width of the product unit [mm]	134
Depth of the product unit [mm]	71
Control operator	Direct / External : L
Number of poles	4
Rated current [A]	63
Type	door mounting
Frame size	CSd

### Technical Characteristics - Connection terminals

Max. connection section / AWG	#4
Min. connection section / AWG	#14

### Technical Characteristics - Environmental

Operating temperature	-4 ... +122°F / -20 ... +50°C
Storage temperature	-40 ... +158°F / -40 ... +70°C

### Technical Characteristics - Mechanical

Endurance (number of operating cycles)	100000
Operating torque [lbs.in/Nm]	22.1 / 2.5

### ETIM - Electrical characteristics

Max. rated operation voltage Ue AC [V]	690
Rated operating voltage [V]	400..690
Rated permanent current Iu [A]	63
Rated permanent current at AC-23, 400 V [A]	63
Rated permanent current at AC-21, 400 V [A]	63
Rated operation power at AC-23, 400 V [kW]	37
Switching power at 400 V [kW]	37
Conditioned rated short-circuit current Iq [kA]	5
Number of poles	4

### ETIM - Mechanical characteristics

Suitable for floor mounting	No
Suitable for front mounting 4-hole	Yes
Suitable for front mounting centre	Yes
Suitable for distribution board installation	No
Suitable for intermediate mounting	No
Colour control element	Black
Degree of protection (IP), front side	IP20
<b>ETIM - Technical features</b>	
Version as main switch	Yes
Version as maintenance-/service switch	Yes
Version as safety switch	Yes
Version as emergency stop installation	No
Version as reversing switch	Yes
Number of switches	1
Motor drive optional	No
Motor drive integrated	No
Voltage release optional	No
Device construction	Built-in device fixed built-in technique
Type of control element	Short thumb-grip
Interlockable	Yes
Type of electrical connection of main circuit	Cable clamp
<b>Logistics</b>	
GTIN/EAN	3596033033360
Customs number	8536508000
Price unit	PC
Weight of the packing unit [kg]	0.597
Length of the packing unit [m]	0.118
Width of the packing unit [m]	0.102
Depth of the packing unit [m]	0.165
<b>Product Details</b>	
Effective date	2018-09-18
Offer Life Cycle Code	40
Country of origin	DE
<b>Classification</b>	
UNSPSC	39122205
ETIM Class	EC000216
IGCC	5177