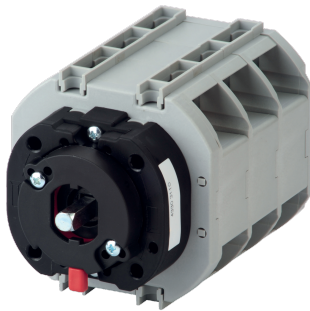


43303106

COMO CS switch body, I-0-II function, 3P, door mounting, 63A



Strong points

- Simple installation
- Quick mounting
- Effective in all circumstances

General characteristics

- Range from 25 A to 100 A.
- Available in 3P or 4P.
- Rear mounting or door mounting.
- Available as stand-alone switches or enclosed.

Compliance with standards

- UL 60947-4-1
- IEC 60947-3

Link to the reference

<https://www.socomec.us/en-us/reference/43303106>

They ensure switching, transfer of sources or transfer of two low voltage circuits on load as well as their safe disconnection.

----- System -----

Fill rate E-Order Common	71
Fill rate E-Order Selection	100

Certificates and Declaration

Conformity to standard #1	UL60947-4-1
Conformity to standard #2	CSA-C22.2 No. 60947-4-10
Conformity to standard #3	IEC 60947-3
Proposition 65 California	WARNING This product can expose you to chemicals including Styrene, which is known to the State of California to cause cancer. For more information go to: www.P65Warnings.ca.gov

Standards

Conformity to standards	IEC UL
-------------------------	------------

Certificates and Declaration - Safety

UL file number	E237502
----------------	---------

Technical Characteristics

Control operator	Direct / External : L
Number of poles	3
Rated current [A]	63
Type	door mounting
Frame size	CSd

Technical Characteristics - Connection terminals

Max. connection section / AWG	#4
Min. connection section / AWG	#14

Technical Characteristics - Environmental

Operating temperature	-4 ... +122°F / -20 ... +50°C
Storage temperature	-40 ... +158°F / -40 ... +70°C

Technical Characteristics - Mechanical

Endurance (number of operating cycles)	100000
Operating torque [lbs.in/Nm]	22.1 / 2.5

ETIM - Electrical characteristics

Max. rated operation voltage Ue AC [V]	690
Rated operating voltage [V]	400..690
Rated permanent current Iu [A]	63
Rated permanent current at AC-23, 400 V [A]	63
Rated permanent current at AC-21, 400 V [A]	63
Rated operation power at AC-23, 400 V [kW]	37
Switching power at 400 V [kW]	37
Conditioned rated short-circuit current Iq [kA]	5
Number of poles	3

ETIM - Mechanical characteristics

Suitable for floor mounting	No
Suitable for front mounting 4-hole	Yes
Suitable for front mounting centre	Yes
Suitable for distribution board installation	No

Suitable for intermediate mounting	No
Colour control element	Black
Degree of protection (IP), front side	IP20
ETIM - Technical features	
Version as main switch	Yes
Version as maintenance-/service switch	Yes
Version as safety switch	Yes
Version as emergency stop installation	No
Version as reversing switch	Yes
Number of switches	1
Motor drive optional	No
Motor drive integrated	No
Voltage release optional	No
Device construction	Built-in device fixed built-in technique
Type of control element	Short thumb-grip
Interlockable	Yes
Type of electrical connection of main circuit	Cable clamp
Logistics	
GTIN/EAN	3596033033520
Customs number	8536508090
Price unit	PC
Weight of the packing unit	0.455
Length of the packing unit	0.12
Width of the packing unit	0.13
Depth of the packing unit	0.095
Product Details	
Effective date	2018-09-18
Country of origin	DE
Discount Policy	1CH10
Discount Policy Label	COMO C
Length of the product unit	0.074
Width of the product unit	0.113
Depth of the product unit	0.071
Classification	
UNSPSC	39122205
ETIM Class	EC000216
IGCC	5177