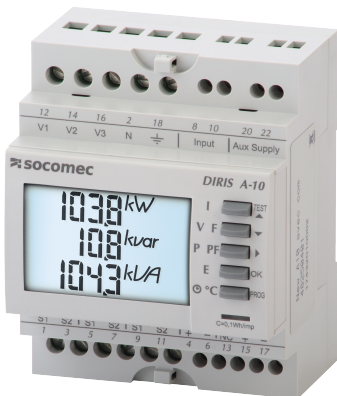


48250401

Multifunction meter DIRIS A-10 RS485 MODBUS COM



Strong points

- Easy to use
- Built-in battery temperature sensor
- Detects wiring errors
- Compliant with ANSI C12.20 and IEC 61557-12
- Bi-Directional Metering

General characteristics

Easy to use with five pushbuttons to access all the measurements on the backlit LCD display
Integrated temperature sensor
Wiring errors detection
Class 0.5 in accordance with ANSI C12.20

Compliance with standards

UL 61010, CSA-C22.2 No. 61010-1
Guide PICQ File E257746;
ANSI C12.20;
IEC 61557-12;
CEC compliant

Link to the reference

The DIRIS A-10 is a DIN-rail-mounted multifunction power monitoring device for low-voltage electrical installations.

Compatible with 5A secondary CTs.

The A-10 has 1 digital input and 1 digital output for additional versatility and exists with serial Modbus RS485 communication to report all measurements to an Energy Management System.

Five direct access pushbuttons enable all measurements to be clearly viewed on the backlit LCD display. An integrated test function can be utilized to detect incorrect wiring and to correct CT installation errors automatically.

Certificates and Declaration

Conformity to standard #1	UL 61010-1 Guide PICQ File E257746
Conformity to standard #2	CSA-C22.2 No. 61010-1
Conformity to standard #3	CEC Compliant
Conformity to standard #4	E257746
Proposition 65 California	WARNING This product can expose you to chemicals including bisphenol A (BPA), which is known to the State of California to cause birth defects or reproductive harm. For more information go to : www.P65Warnings.ca.gov

Environmental Sustainability

PEP Filename	SOCO-00033-V01.01-EN.pdf
--------------	--------------------------

Standards

Conformity to standards	IEC UL
-------------------------	------------

Certificates and Declaration - Safety

Safety standards	IEC/EN 61010-1 UL 61010-1 CAN/CSA C22.2 No. 61010-1
UL file number	E257746

General Product Characteristics

Device type	Multifuntion Power Metering and Monitoring Device (PMD)
-------------	---

Technical Characteristics

Application	Monitoring
Communication ports	RS485
Communication protocols	Modbus
Model	A-10

Technical Characteristics - Electrical

Max voltage (Phase/neutral)	28 ... 289 VAC
-----------------------------	----------------

Technical Characteristics - Environmental

Operating temperature	+14 °F ... +131 °F / - 10 ... + 55 °C
Relative humidity	0.85
Storage temperature	-4 °F ... +158 °F / - 20 ... + 70 °C

Technical Characteristics - Measurement

Current measurement type	AC
Frequency rating	50/60 Hz
General measurements	Metering: +/- kWh, +/- kvarh, kVAh Multi-tariff (2 max) Multi-measurement: V1, V2, V3, U12, U23, U31, f I1, I2, I3, In, ΣP, ΣQ, ΣS, ΣPF P, Q, S, PF per phase Voltage Ph/N unbalance Voltage Ph/Ph unbalance Current unbalance

Number of Digital inputs/outputs	1 Digital input / 1 Digital output
Power Quality measurements	THD V1, V2, V3, U12, U23, U31, I1, I2, I3
Voltage measurement type	AC
Technical Characteristics - Power supply	
Power supply / Supply voltage VAC 50/60 Hz	110 ... 277 VAC
ETIM - Electrical characteristics	
Accuracy class active energy according to IEC 62053-22	0.2S
Accuracy class reactive energy according to IEC 62053-23	Other
Sampling frequency [Hz]	65
Number of voltage measurement inputs	3
Number of current measurement inputs	3
Voltage type (supply voltage)	AC
Supply voltage AC 50 Hz [V]	110..277
Supply voltage AC 60 Hz [V]	110..277
Measuring range for frequency [Hz]	45..65
ETIM - Technical features	
Ampere meter	Yes
Blind power meter	Yes
With rotational speed meter	No
Frequency meter	Yes
Pulse counter	Yes
Voltmeter	Yes
Effective power measurement device	Yes
Display	LCD
Remote display	No
Logistics	
GTIN/EAN	3596033014802
Customs number	9030310090
Price unit	PC
Weight of the packing unit [kg]	0.308
Length of the packing unit [m]	0.135
Width of the packing unit [m]	0.091
Depth of the packing unit [m]	0.107
Product Details	
Effective date	2017-12-01
Offer Life Cycle Code	40
Country of origin	FR
Classification	
UNSPSC	83101808
ETIM Class	EC002301
IGCC	6042