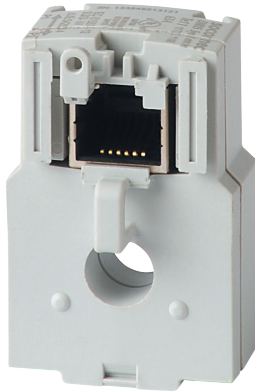


**48290500**

## Solid current sensor TE-18 18mm 5-20A



### Strong points

- Plug & Play
- Accurate
- Smart

### General characteristics

Quick RJ12 connection making wiring easy and without errors  
 Safe mV output: on-load disconnection of the sensor  
 Global accuracy class 0.5 according to ANSI C12.20 (Meter + TE sensor)  
 Designed for new installations  
 Similar spacing as standard protective devices

### Compliance with standards

UL 61010-1, CSA-C22.2, 61010-1, Guide PICQ, File E257746;  
 IEC 61557-12;  
 ISO 14025

### Link to the reference

TE solid-core sensors are used with DIRIS Digiware I, DIRIS A, or DIRIS B Power Monitoring Devices to measure currents from 5 to 2000 A with only 7 part numbers and with the same guaranteed accuracy. The quick RJ12 connection, and the integrated intelligence prevent any connection or configuration errors.

Numerous accessories are available to mount the sensors in any type of electrical panel.

### Certificates and Declaration

Conformity to standard #1	UL 61010-1 Guide PICQ File E257746
Conformity to standard #2	CSA-C22.2 No. 61010-1
Conformity to standard #3	IEC 61557-12
Conformity to standard #4	ISO 14025
Proposition 65 California	WARNING This product can expose you to chemicals including bisphenol A (BPA), which is known to the State of California to cause birth defects or reproductive harm. For more information go to : <a href="http://www.P65Warnings.ca.gov">www.P65Warnings.ca.gov</a>

### Standards

Conformity to standards	IEC UL
-------------------------	------------

### Certificates and Declaration - Safety

Safety standards	IEC/EN 61010-1 UL 61010-1 CAN/CSA C22.2 No. 61010-1
UL file number	E257746

### General Product Characteristics

Device type	Current sensors for DIRIS A, DIRIS B & DIRIS Digiware I
-------------	---

### Technical Characteristics

Model	TE-18
Opening	Diam. 0.33 in / 8.6 mm
Rated current [A]	5 ... 20 A
Secondary rated current	RJ12
Function	Current measurement
Type of current	AC
Type of product	Solid core
Internal diameter	9
Secondary Output	Voltage
Accuracy class	0.5
Type of connection	RJ12
Conformity to standards	IEC 61557-12 UL 61010
Customisable	No

### Technical Characteristics - Electrical

Intermittent overload	10x In for 1s
Max voltage (Phase/neutral)	300V
Rated withstand voltage	3kV

### Technical Characteristics - Environmental

Maximum operating altitude	6560 feet / 2000 m
Measurement category	CAT III
Operating temperature	-10 ... +70 °C / +14 °F ... +158 °F (IEC 60068-2-1/IEC 60068-2-2)

PEP ecopassport - ISO 14025	SOCO-2014-03-v1-fr, SOCO-2014-03-v1-en
Relative humidity	95% RH without condensation
Storage temperature	-25 ... +85 °C / -13 °F ... +185 °F (IEC 60068-2-1/IEC 60068-2-2)
<b>Technical Characteristics - Measurement</b>	
Accuracy class	0.5 for the global measurement chain (Associated with Digiware I, DIRIS B & DIRIS A)
Current measurement type	AC
Current rating range	5-20 A
Current Sensor Secondary type	100mV
Current sensor type	Solid Core
Degree of Pollution	IP20 / IK06
Frequency rating	50/60 Hz
Full measurement range	0.1-24 A
<b>ETIM - Electrical characteristics</b>	
Rated primary current [A]	20
Rated secondary current [A]	0.1
Rated secondary apparent power [VA]	0.1
Accuracy class	0.2S
Overcurrent limiting factor	FS 10
Calibrated	Yes
<b>ETIM - Mechanical characteristics</b>	
With contact protection	Yes
Height opening [mm]	8.6..8.6
Width opening [mm]	8.6..8.6
Opening diameter [mm]	8.6
Snap mounting	Yes
With copper rail	Yes
Secondary connection	Plug-in connection
<b>ETIM - Technical features</b>	
Model	Through-feed current converter
Number of primary inputs	1
<b>Logistics</b>	
GTIN/EAN	3596032776466
Customs number	8504312990
Price unit	PC
Weight of the packing unit [kg]	0.03
Length of the packing unit [m]	0.02
Width of the packing unit [m]	0.11
Depth of the packing unit [m]	0.13
<b>Product Details</b>	
Effective date	2013-11-22
Offer Life Cycle Code	40
Country of origin	FR
<b>Classification</b>	
UNSPSC	83101808
ETIM Class	EC002048
IGCC	6042