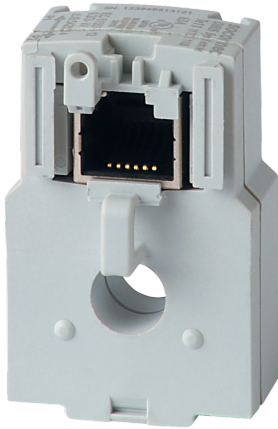


48290501

Solid current sensor TE-18 18mm 25-63A



Strong points

- Plug & Play
- Accurate
- Smart

General characteristics

Quick RJ12 connection making wiring easy and without errors
Safe mV output: on-load disconnection of the sensor
Global accuracy class 0.5 according to ANSI C12.20 (Meter + TE sensor)
Designed for new installations
Similar spacing as standard protective devices

Compliance with standards

UL 61010-1, CSA-C22.2, 61010-1,
Guide PICQ, File E257746;
IEC 61557-12;
ISO 14025

Link to the reference

<https://www.socomec.us/en-us/reference/48290501>

TE solid-core sensors are used with DIRIS Digiware I, DIRIS A, or DIRIS B Power Monitoring Devices to measure currents from 5 to 2000 A with only 7 part numbers and with the same guaranteed accuracy. The quick RJ12 connection, and the integrated intelligence prevent, any connection or configuration errors. Numerous accessories are available to mount the sensors in any type of electrical panel.

----- System -----	
Fill rate E-Order Common	29
Fill rate E-Order Selection	100
Certificates and Declaration	
Conformity to standard #1	UL 61010-1 Guide PICQ File E257746
Conformity to standard #2	CSA-C22.2 No. 61010-1
Conformity to standard #3	IEC 61557-12
Conformity to standard #4	ISO 14025
Proposition 65 California	WARNING This product can expose you to chemicals including bisphenol A (BPA), which is known to the State of California to cause birth defects or reproductive harm. For more information go to : www.P65Warnings.ca.gov
Standards	
Conformity to standards	IEC UL
Certificates and Declaration - Safety	
UL file number	E257746
General Product Characteristics	
Device type	Current sensors for DIRIS A, DIRIS B & DIRIS Digiware I
Technical Characteristics	
Model	TE-18
Opening	Diam. 0.33 in / 8.6 mm
Rated current [A]	25 ... 63 A
Secondary rated current	RJ12
Technical Characteristics - Electrical	
Intermittent overload	10x In for 1s
Max voltage (Phase/neutral)	300V
Rated withstand voltage	3kV
Technical Characteristics - Environmental	
Maximum operating altitude	6560 feet / 2000 m
Measurement category	CAT III
Operating temperature	-10 ... +70 °C / +14 °F ... +158 °F (IEC 60068-2-1/IEC 60068-2-2)
PEP ecopassport - ISO 14025	SOCO-2014-03-v1-fr, SOCO-2014-03-v1-en
Relative humidity	95% RH without condensation
Storage temperature	-25 ... +85 °C / -13 °F ... +185 °F (IEC 60068-2-1/IEC 60068-2-2)
Technical Characteristics - Measurement	
Accuracy class	0.5 for the global measurement chain (Associated with Digiware I, DIRIS B & DIRIS A)
Current rating range	25 ... 63 A
Current Sensor Secondary type	100mV

Current sensor type	Solid Core
Degree of Pollution	IP20 / IK06
Frequency rating	50/60 Hz
Full measurement range	0.5 ... 75 A
ETIM - Electrical characteristics	
Rated primary current [A]	63
Rated secondary current [A]	0.1
Rated secondary apparent power [VA]	0.1
Accuracy class	0.2S
Overcurrent limiting factor	FS 10
Calibrated	Yes
ETIM - Mechanical characteristics	
With contact protection	Yes
Height opening [mm]	8.6..8.6
Width opening [mm]	8.6..8.6
Opening diameter [mm]	8.6
Snap mounting	Yes
With copper rail	Yes
Secondary connection	Plug-in connection
ETIM - Technical features	
Model	Through-feed current converter
Number of primary inputs	1
Logistics	
GTIN/EAN	3596032776473
Customs number	8504312990
Price unit	PC
Weight of the packing unit	0.03
Length of the packing unit	0.015
Width of the packing unit	0.11
Depth of the packing unit	0.13
Product Details	
Effective date	2013-11-22
Country of origin	FR
Discount Policy	1EN30
Discount Policy Label	SENSORS
Classification	
UNSPSC	83101808
ETIM Class	EC002048
IGCC	6042