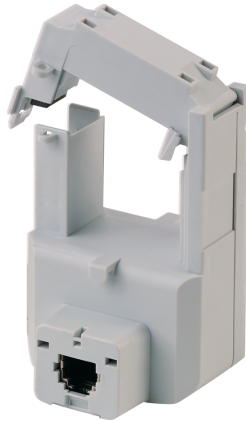


48290558

Sensor TR-32 32mm 160-600A



Strong points

- Smart sensors
- Accurate
- Smart

General characteristics

Quick RJ12 connection for ease of wiring and prevention of errors
Safe mV output: on-load disconnection of the sensor
Global accuracy class 1 (Meter + TR sensor) and class 0.5 (PMD + iTR sensor) according to ANSI C12.20
VirtualMonitor and AutoCorrect technologies available with iTR sensors

Compliance with standards

UL 61010-1, CSA-C22.2, 61010-1, Guide PICQ, File E257746
IEC 61557-12
ISO 14025

Link to the reference

TR split-core current sensors are used with DIRIS Digiware I, DIRIS A, or DIRIS B Power Monitoring Devices to measure currents from 25 to 600 A, with the same guaranteed accuracy. The quick RJ12 connection, and the integrated intelligence prevent any wiring or configuration errors. TR split-core sensors are placed around the live conductors without disrupting the wiring and the supply, highly convenient for retrofit applications.

Certificates and Declaration

Conformity to standard #1	UL 61010-1 Guide PICQ File E257746
Conformity to standard #2	CSA-C22.2 No. 61010-1
Conformity to standard #3	IEC 61557-12
Conformity to standard #4	ISO 14025
Proposition 65 California	WARNING This product can expose you to chemicals including bisphenol A (BPA), which is known to the State of California to cause birth defects or reproductive harm. For more information go to : www.P65Warnings.ca.gov

Standards

Conformity to standards	IEC UL
-------------------------	------------

Certificates and Declaration - Safety

UL file number	E257746
----------------	---------

General Product Characteristics

Device type	Current sensors for DIRIS A, DIRIS B & DIRIS Digiware I
-------------	---

Technical Characteristics

Model	TR-32
Opening	1.26 in / 32 mm
Rated current [A]	160 ... 600 A
Secondary rated current	RJ12
Function	Current measurement
Type of current	AC
Type of product	Split core
Internal diameter	32x32
Secondary Output	Voltage
Accuracy class	1
Type of connection	RJ12
Conformity to standards	IEC 61557-12 UL 61010
Customisable	No

Technical Characteristics - Electrical

Intermittent overload	10x In for 1s
Max voltage (Phase/neutral)	300
Rated withstand voltage	3kV

Technical Characteristics - Environmental

Maximum operating altitude	6560 feet / 2000 m
Measurement category	CAT III
Operating temperature	-10 ... +70 °C / +14 °F ... +158 °F (IEC 60068-2-1/IEC 60068-2-2)
Relative humidity	95% RH without condensation
Storage temperature	-25 ... +85 °C / -13 °F ... +185 °F (IEC 60068-2-1/IEC 60068-2-2)

Technical Characteristics - Measurement

Accuracy class	0.5 for the global measurement chain (Associated with Digiware I, DIRIS B & DIRIS A)
Current rating range	160 ... 600 A
Current Sensor Secondary type	100mV
Current sensor type	Split Core
Degree of Pollution	IP20 / IK06
Frequency rating	50/60 Hz
Full measurement range	3.2 ... 720 A

ETIM - Electrical characteristics

Rated primary current [A]	600
Rated secondary current [A]	0.1
Rated secondary apparent power [VA]	0.1
Accuracy class	0.5
Overcurrent limiting factor	FS 10
Calibrated	Yes

ETIM - Mechanical characteristics

With contact protection	Yes
Height opening [mm]	32..32
Width opening [mm]	32..32
Opening diameter [mm]	32
Snap mounting	Yes
With copper rail	Yes
Secondary connection	Plug-in connection

ETIM - Technical features

Model	Attachable current transformer
Number of primary inputs	1

Logistics

GTIN/EAN	3596033018367
Customs number	8504312990
Price unit	PC
Weight of the packing unit [kg]	0.19
Length of the packing unit [m]	0.06
Width of the packing unit [m]	0.06
Depth of the packing unit [m]	0.09

Product Details

Effective date	2018-06-01
Offer Life Cycle Code	40
Country of origin	FR

Classification

UNSPSC	83101808
ETIM Class	EC002048
IGCC	6042