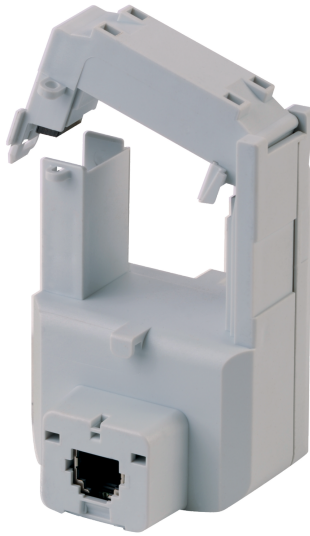


**48290658**

## Sensor iTR-32 32mm 160-600A



### Strong points

- Plug & Play
- Accurate
- VirtualMonitor technology
- AutoCorrect technology

### General characteristics

- Range from 25 to 600 A.
- Used with power monitoring device DIRIS Digiware, DIRIS A, DIRIS B.
- PreciSense technology: Accurate.
- Easy installation and configuration.

### Compliance with standards

- UL 61010-1 CSA-C22.2, 61010-1, Guide PICQ, File E257746
- IEC 61557-12
- ISO 14025

### Link to the reference

<https://www.socomec.us/en-us/reference/48290658>

iTR split-core current sensors are used with DIRIS Digiware I, DIRIS A, or DIRIS B Power Monitoring Devices to measure currents from 25 to 600 A, with the same guaranteed accuracy. The quick RJ12 connection, and the integrated intelligence prevent, any wiring or configuration errors.

iTR split-core sensors are placed around the live conductors without disrupting the wiring and the supply, highly convenient for retrofit applications.

The iTR range offers outstanding technologies:

VirtualMonitor which gives the real time physical state of protective devices

AutoCorrect which detects wiring errors and corrects them to guarantee consistent readings.

#### ----- System -----

Fill rate E-Order Common	29
Fill rate E-Order Selection	100

#### Certificates and Declaration

Conformity to standard #1	UL 61010-1 Guide PICQ File E257746
Conformity to standard #2	CSA-C22.2 No. 61010-1
Conformity to standard #3	IEC 61557-12
Conformity to standard #4	ISO 14025
Proposition 65 California	WARNING This product can expose you to chemicals including bisphenol A (BPA), which is known to the State of California to cause birth defects or reproductive harm. For more information go to : <a href="http://www.P65Warnings.ca.gov">www.P65Warnings.ca.gov</a>

#### Standards

Conformity to standards	IEC UL
-------------------------	------------

#### Certificates and Declaration - Safety

UL file number	E257746
----------------	---------

#### General Product Characteristics

Device type	Current sensors for DIRIS A, DIRIS B & DIRIS Digiware I
-------------	---

#### Technical Characteristics

Model	iTR-32
Opening	1.26 in / 32 mm
Rated current [A]	160 ... 600 A
Secondary rated current	RJ12

#### Technical Characteristics - Electrical

Intermittent overload	10x In for 1s
Max voltage (Phase/neutral)	300
Rated withstand voltage	3kV

#### Technical Characteristics - Environmental

Maximum operating altitude	6560 feet / 2000 m
Measurement category	CAT III
Operating temperature	-10 ... +70 °C / +14 °F ... +158 °F (IEC 60068-2-1/IEC 60068-2-2)
Relative humidity	95% RH without condensation
Storage temperature	-25 ... +85 °C / -13 °F ... +185 °F (IEC 60068-2-1/IEC 60068-2-2)

#### Technical Characteristics - Measurement

Accuracy class	0.5 for the global measurement chain (Associated with Digiware I, DIRIS B & DIRIS A)
----------------	--

Current rating range	160 ... 600 A
Current Sensor Secondary type	100mV
Current sensor type	Split Core
Degree of Pollution	IP20 / IK06
Frequency rating	50/60 Hz
Full measurement range	3.2 ... 720 A
<b>ETIM - Electrical characteristics</b>	
Rated primary current [A]	600
Rated secondary current [A]	0.1
Rated secondary apparent power [VA]	0.1
Accuracy class	0.2S
Overcurrent limiting factor	FS 10
Calibrated	Yes
<b>ETIM - Mechanical characteristics</b>	
With contact protection	Yes
Height opening [mm]	32..32
Width opening [mm]	32..32
Opening diameter [mm]	32
Snap mounting	Yes
With copper rail	Yes
Secondary connection	Plug-in connection
<b>ETIM - Technical features</b>	
Model	Attachable current transformer
Number of primary inputs	1
<b>Logistics</b>	
GTIN/EAN	3596033020100
Customs number	8504312990
Price unit	PC
Weight of the packing unit	0.187
Length of the packing unit	0.05
Width of the packing unit	0.13
Depth of the packing unit	0.16
<b>Product Details</b>	
Effective date	2018-01-01
Country of origin	FR
Discount Policy	1EN30
Discount Policy Label	SENSORS
<b>Classification</b>	
UNSPSC	83101808
ETIM Class	EC002048
IGCC	6042