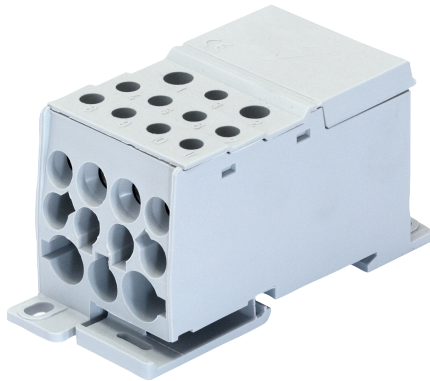


54111025

DISTRIBUTION BLOCK UNIPOLAR 250 A IEC AND 255 A UR



Strong points

- Extensive range
- IEC and UL range
- Easy integration

General characteristics

Touch safe protection from live parts with IP20, finger-safe design
 Ease of integration with DIN RAIL or direct panel mounted
 Space saving with its compact footprint

IEC voltage range: up to 1000VAC and 1500VDC

UL voltage range: up to 1000VAC and 1000VDC

Compliance with standards

UL 1953, Guide QPQS, File E500778
 UR 1059, CSA-C22.2 No. 128, Guide XCFR, File E500524
 cURus 1059 Guide XCFR8 File E500524
 IEC 60947-7-1

Link to the reference

SOCOME Power distribution blocks allow easy connection of conductors. They are installed downstream of protective, disconnect or transfer switch devices.

Certificates and Declaration

| | |
|---------------------------|--|
| Conformity to standard #1 | UL 1059 Guide XCFR, File E500524 |
| Conformity to standard #2 | CSA-C22.2 NO. 128 |
| Conformity to standard #3 | IEC 60947-7-1 |
| Proposition 65 California | WARNING This product can expose you to chemicals including Styrene, Formaldehyde which is known to the State of California to cause cancer. For more information go to: www.P65Warnings.ca.gov |

Standards

| | |
|-------------------------|------------|
| Conformity to standards | IEC UL |
|-------------------------|------------|

Certificates and Declaration - Safety

| | |
|----------------|---------|
| UL file number | E500524 |
|----------------|---------|

Technical Characteristics

| | |
|---------------------------------|----------|
| Length of the product unit [mm] | 44.5 |
| Width of the product unit [mm] | 95 |
| Depth of the product unit [mm] | 49 |
| Weight [kg] | 0.225 |
| Number of conductors | 12 |
| Number of poles | 1 |
| Rated current [A] | 250..255 |

Technical Characteristics - Connection terminals

| | |
|-------------------------------|--|
| Max. connection section / AWG | 250 kcmil (Line), 2x AWG (Load 1), 5x 6AWG (Load2), 4x 8AWG (LOAD 3) |
| Min. connection section / AWG | 2kcmil (Line), 14AWG (Load 1,2,3) |

Technical Characteristics - Environmental

| | |
|-----------------------|--------------------------------|
| Operating temperature | -4 ... +122°F / -20 ... +50°C |
| Storage temperature | -40 ... +158°F / -40 ... +70°C |

Technical Characteristics - Short-circuit capacity

| | |
|---------------------------|----------|
| UL General use rating [A] | 255 (Cu) |
|---------------------------|----------|

ETIM - Mechanical characteristics

| | |
|-----------------|----|
| Number of poles | 1 |
| With seal head | No |

Logistics

| | |
|---------------------------------|---------------|
| GTIN/EAN | 3596033047602 |
| Customs number | 8536901000 |
| Price unit | PC |
| Weight of the packing unit [kg] | 0.2 |
| Length of the packing unit [m] | 0.05 |
| Width of the packing unit [m] | 0.05 |
| Depth of the packing unit [m] | 0.1 |

Product Details

| | |
|-----------------------|------------|
| Effective date | 2018-03-06 |
| Offer Life Cycle Code | 40 |

| | |
|-----------------------|----------|
| Country of origin | FR |
| Classification | |
| UNSPSC | 39121421 |
| ETIM Class | EC000276 |
| IGCC | 4586 |