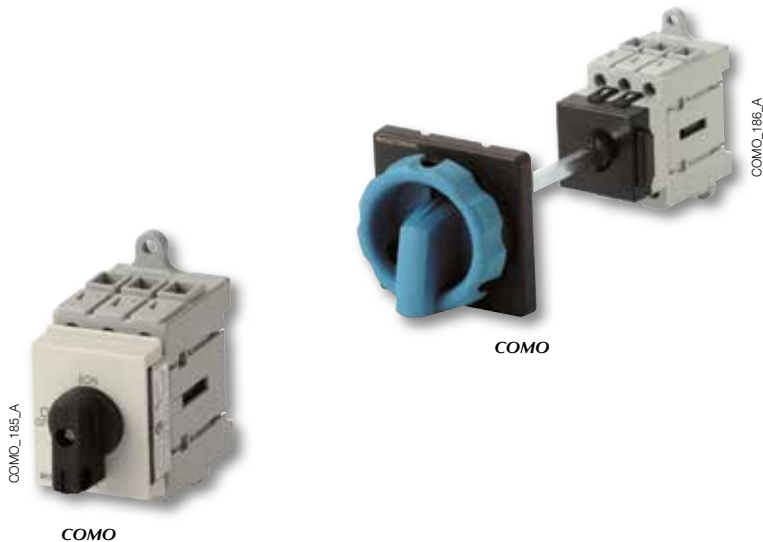




# COMO

Non-fusible disconnect switches  
from 30 to 50 A



## Function

COMO are compact and modular non-fusible disconnect switches. They make and break under all types of load conditions and provide safe isolation for any low voltage circuit, especially for machine control circuits.

## General characteristics

- 2 stable positions (I, 0)
- Double break per phase
- Positive contact indication
- Contact point technology
- Padlocking in 0 position
- IP20 devices and accessories

## Advantages

### Easy mounting

Three mounting possibilities are available for optimum integration and time saving:

- DIN rail or back plate mounting,
- Door mounting,
- "Quick Fix" mounting to save time when integrating in high quantities.

### Compact

Thanks to its compact design panel space is greatly reduced.

### Safety

- Direct access to connection terminals for adequate tightening
- Lockable rotary operating mechanism

## The solution for

- > Industrial control systems



## Strong points

- > Easy mounting
- > Compact
- > Safety

## Conformity to standards

- > UL 60947-4-1<sup>(1)</sup>



- > IEC 60947-3



(1) New UL standard replaces UL508

## Local safety enclosures

- > The COMO is fitted within a polycarbonate enclosure and can be used, for example, for on load breaking of a motor (HP rated).

## References

### DIN rail/back plate mounting

Rating (A)	Type	Switch	4 <sup>th</sup> pole	External handle K1 type IP65 - 4/4X blue/black no defeater	External handle K1 type IP65 - 4/4X red/yellow no defeater	Extension shaft	Aux contact NO+NC	Neutral pole	Earth pole	Terminal shrouds
30 A	for direct operation	2111 3003	2111 1003	-	-	-	2113 4000	2111 1056	2111 1076	1 P (top and bottom) 2113 5001  3 P (top and bottom) 2113 5003
	for external operation	2111 3103		with guide shaft 2113 1112	with guide shaft 2113 1113	200 mm 2113 2200				
50 A	for direct operation	2111 3005	2111 1005	-	-	-	2113 4000	2111 1056	2111 1076	
	for external operation	2111 3105		with guide shaft 2113 1112	with guide shaft 2113 1113	200 mm 2113 2200				
						with cross coupling 2113 1212				320 mm 2113 2320
						with cross coupling 2113 1213				320 mm 2113 2320

### Door mounting

Rating (A)	Type	Switch	4 <sup>th</sup> pole	External handle K1 type IP65 - 4/4X blue/black no defeater	External handle K1 type IP65 red/yellow no defeater	Aux contact NO+NC	Neutral pole	Earth pole	Terminal shrouds
30 A	with screws	2111 3203	2111 1203	2113 1322	2113 1323	2113 4200	2111 1256	2111 1276	1 P (top and bottom) 2113 5001  3 P (top and bottom) 2113 5003
	quick fix	2111 3303		2113 1332	2113 1333				
50 A	with screws	2111 3205	2111 1205	2113 1322	2113 1323	2113 4200	2111 1256	2111 1276	
	quick fix	2111 3305		2113 1332	2113 1333				

## Accessories

### External operation handle

#### DIN-rail or back plate mounting

Rating (A)	Handle type	With guide shaft or cross coupling	Handle colour	Nema degree of protection	Reference
30 ... 50	K1	guide shaft	black/blue	4, 4X	2113 <b>1112</b>
			red/yellow		2113 <b>1113</b>
		compensation	black/blue		2113 <b>1212</b>
			red/yellow		2113 <b>1213</b>



#### Door mounting

Rating (A)	Handle type	Door mounting type	Handle colour	Nema degree of protection	Reference
30 ... 50	K1	4 screws	black/blue	4, 4X	2113 <b>1322</b>
			red/yellow		2113 <b>1323</b>
		quick fix	black/blue		2113 <b>1332</b>
			red/yellow		2113 <b>1333</b>



### Shaft for external handle

#### Use

Shaft extensions are for external front operation. The shaft is clipped directly into the COMO without using a screw.

#### Shafts

7.9 in (200 mm), 12.6 in (320 mm),  
(custom length, for high qty).

Rating (A)	Handle type	Length		Reference
		(in)	(mm)	
30 ... 50	K1	7.9	200	2113 <b>2200</b>
		12.6	320	2113 <b>2320</b>



## Additional pole

### Use

Installation of this switched pole converts a 3 pole COMO into a 4 pole non-fusible switches, 3 pole + neutral or 3 pole + earth.

The 4<sup>th</sup> pole can be mounted without tools on the right or left side of the device.

Max 2 additional modules, 1 switching module and 1 unswitched module.

### Switched fourth pole module

Rating (A)	Type of mounting	Type	Reference
30	back mounting	switched	2111 1003
	door mounting		2111 1203
50	back mounting		2111 1005
	door mounting		2111 1205



### Solid neutral pole

Rating (A)	Type of mounting	Type	Reference
30...50	back mounting	unswitched	2111 1056
	door mounting		2111 1256



### Ground module

Rating (A)	Type of mounting	Type	Reference
30...50	back mounting	unswitched	2111 1076
	door mounting		2111 1276



## Auxiliary contacts

### Use

There are two types of auxiliary contact, one for back plate mounting and one for door mounting. NO+NC auxiliary contacts per device (1 on each side of the device).

Rating (A)	Type of mounting	Contact(s)	Contact type	Reference
30...50	back mounting	1 contact	NO+NC	2113 4000
	door mounting			2113 4200



## Terminal shrouds

### Use

Top and bottom protection against direct contact with terminal or connection parts.

Available in 1 or 3 pole version. Top and bottom pair.

Rating (A)	Type of mounting	No. of poles	Position	Pack (unit)	Reference
30...50	back/door mounting	1 P	top and bottom	2	2113 5001
		2 P		2	2113 5003



## Characteristics

### Characteristics according to UL 60947-4-1 (replaces UL508)

30 to 50 A		
General use rating (A)	30 A	50 A
Short circuit rating at 600 VAC (kA)	5	
Branch circuit fuse type	RK5	
Max fuse rating (A)	50 A	
<b>Max horsepower rating / Max motor FLA current</b>		
120 VAC / 1 phase	2 / 24	3 / 34
120 VAC / 3 phase	3 / 19.2	5 / 30.4
240 VAC / 1 phase	3 / 17	10 / 50
240 VAC / 3 phase	10 / 28	10 / 28
480 VAC / 3 phase	20 / 27	25 / 34
600 VAC / 3 phase	22 / 27	30 / 32
<b>Connection terminals</b>		
Solid - 1 wire	#14 - #6	
Solid - 2 wires	2 x (#14 - #6)	
<b>Auxiliary contacts</b>		
Electrical characteristics	A300	
<b>Mechanical characteristics</b>		
Endurance (number of operating cycles)	100 000	
Operating torque (lbs.in / Nm)	11.24 / 1.27	

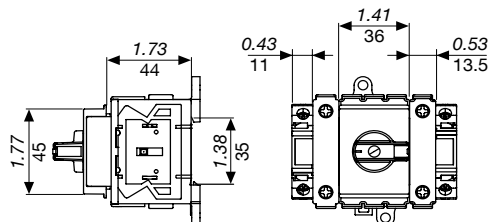
### Characteristics according to IEC 60947-3

32 to 63 A			
Thermal current $I_{th}$ (40°C)		32 A	63 A
Rated insulation voltage $U_i$ (V)		690	690
<b>Rated operational currents <math>I_e</math> (A)</b>			
Rated voltage	Utilisation category	A	A
690 VAC	AC-21A	32	63
<b>Operational power in AC-23A (kW)</b>			
400 VAC without pre-break AC		11.5	22
<b>Operational power in AC-3 (kW)</b>			
400 VAC without pre-break AC		9.5	18.5

Dimensions (in/mm)

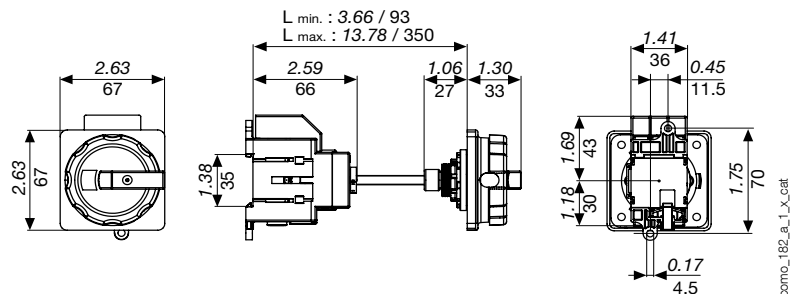
Back mounting

Direct operation



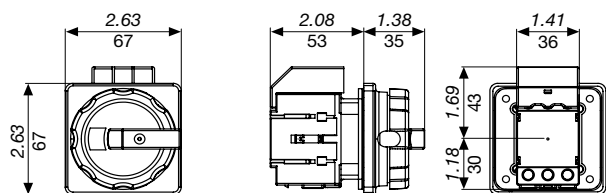
como\_181\_a\_1\_x\_cat

External operation



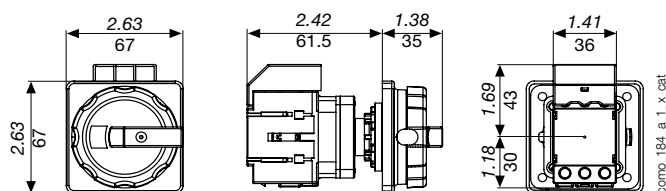
como\_182\_a\_1\_x\_cat

Door mounting



como\_183\_a\_1\_x\_cat

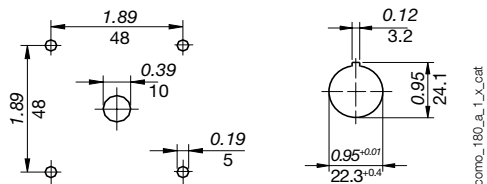
Door mounting quick fix



como\_184\_a\_1\_x\_cat

External handles dimensions (in/mm)

K1 type



como\_190\_a\_1\_x\_cat