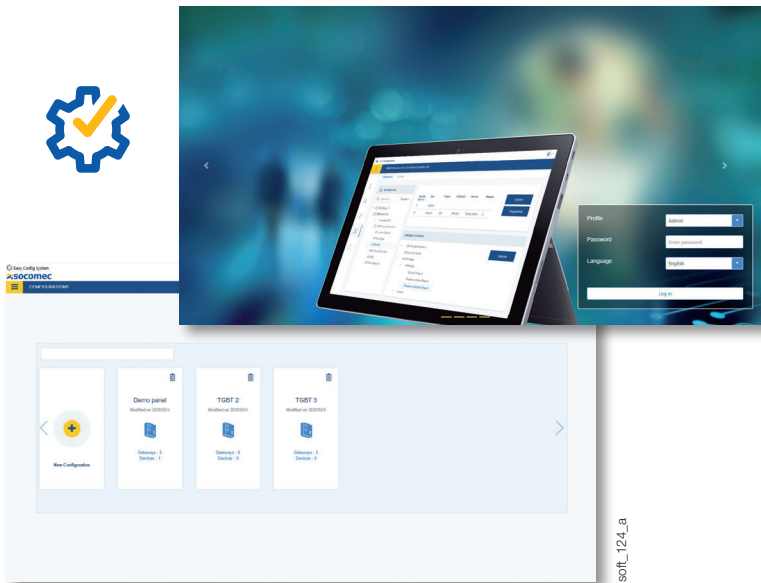







Easy Config System

Configuration software

Software suite



Strong points

-  > Faster
-  > More reliable
-  > More flexible

Compatible with



- > DIRIS Digiware power monitoring system



- > DIRIS A & B power monitoring devices



- > ATyS C66 and AtyS FT/DT

Free download Easy Config System



https://www.socomtec.com/easy-config-system_en.html

Function

With the **Easy Config System**, you can configure your Socomtec power monitoring and load-breaking equipment while visualizing all electrical measurements in real time.

Its speed and simplicity make the Easy Config System software an essential tool for:

- Panel builders and system integrators who want to provide correctly configured electrical panels for their customers
- Operators who want to configure their devices on their own or change specific settings

The bonus: you can easily save and modify your configurations and also duplicate them from one device to another or from one system to another.

Advantages

Quick configuration

Easy Config System is a quick and easy way for system integrators and panel builders to configure their installations:

- Automatic discovery of connected devices
- Configuration of multiple devices at the same time
- Duplication of configurations between devices.

Local or remote access

You can access Easy Config System either locally by connecting it to devices via a USB cable, or remotely with an Ethernet connection. This system provides great flexibility taking into account the constraints of your facility. With the remote access option, you can change settings and correct any configuration or wiring errors, without having to physically return to site.

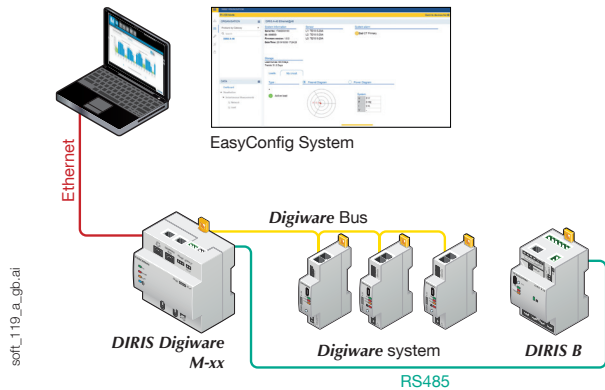
Reliable data

Easy Config System has a dynamic dashboard (see next page) which adapts to the type of device and can display the phasor diagram, the alarms in progress or detected sensors and their ratings. It also provides an overview of the topology, listing the connected devices, with their firmware versions and internal clock, and the quality of communication.

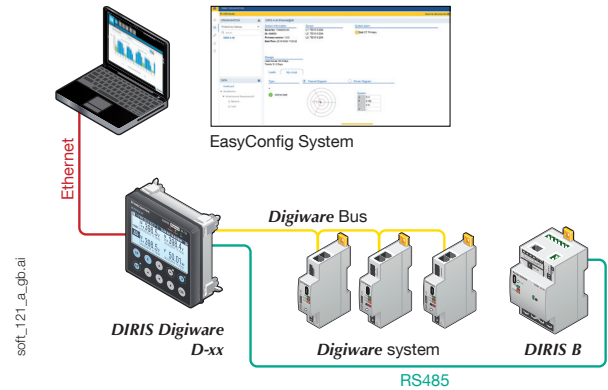
This ensures the user that the wiring and configuration are correct and, as a result, data is reliable.

Configuration options

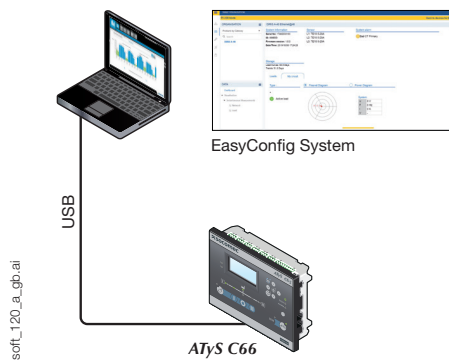
Configure the entire system with an Ethernet connection to a DIRIS Digiware M-xx gateway



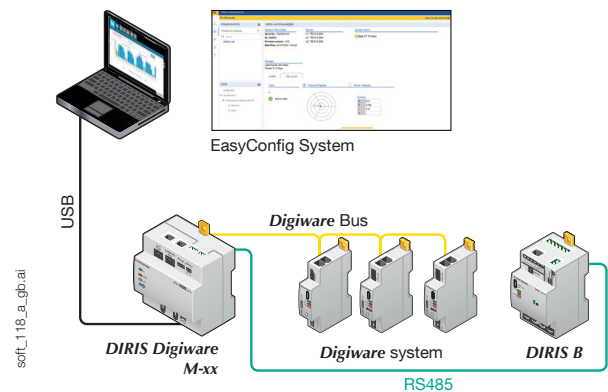
Configure the entire system with an Ethernet connection to a DIRIS Digiware D-xx display



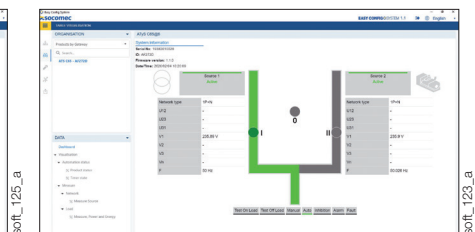
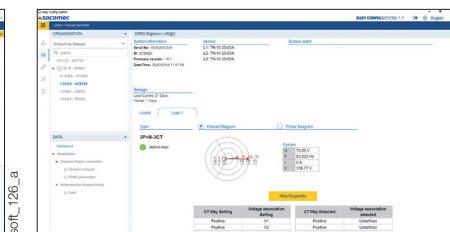
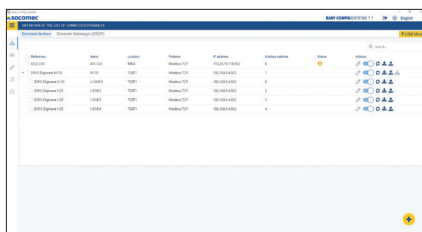
Configure the equipment via USB only



Configure the entire system with a USB connection to a DIRIS Digiware M-xx gateway



A dashboard adapted to each type of device



D-xx displays and M-xx gateways

- List of products in the topology
- Firmware versions of connected devices
- Internal clock for connected devices
- Enabled services
- Communication diagnostics

Multifunction meters

- U/I phasor diagram
- Main electrical readings
- AutoCorrect wiring diagnostics
- Connected sensors and their ratings
- Alarms in progress

Transfer switches

- Electrical data on each source
- Status of primary and secondary sources
- Input/output state
- Alarms in progress
- Operating modes (AUTO/MANU/TEST)
- Timers