



WEBVIEW

Monitoring software for energy measurement and analysis

Software suite



soft_027_a_1_fr_cat

The solution for

- > Industry
- > Building
- > Infrastructures
- > Local authority



Strong points

- > Plug & Play
- > Easy to use
- > Various functions

Compliance with standards

- > IEC 62974-1⁽¹⁾



(1) Energy Server standard applicable to WEBVIEW-M and L versions hosted on DIRIS G, DIRIS Digiware D-70 and DATALOG H80.

Function

The **WEBVIEW** web server embedded in DIRIS A-40 meters and in communication gateways (DIRIS G, DIRIS Digiware D-70, DATALOG H80/H81) delivers real-time monitoring of all measurements from up to 200 devices and displays the breakdown of energy consumption.

Uncover the causes of electrical disturbances and anticipate maintenance requirements thanks to historical records of multiple electrical parameters.

Pre-set alarms defined by the user can be sent by e-mail. Users can access WEBVIEW via a web browser on a laptop or a tablet.

Advantages

Plug & Play

Quickly configure WEBVIEW thanks to the automatic detection of Socomec devices. Create geographical and electrical hierarchies to reflect your installation and your processes.

Easy to use

WEBVIEW centralizes all the device measurements via a single clear and user friendly interface. The ergonomics of the display screens allow users to easily and quickly analyse the parameters and the behaviour of the installation.

Various functions

Very easy to configure and to use, WEBVIEW offers a wide range of features including real-time monitoring, alarm management and transmission by e-mail, multi-utility analysis (electricity, water, gas), power parameter logging and allocation of consumption by end-use and location.

Characteristics

Type	Hosting	Functions	Number of measurement devices
WEBVIEW-S	DIRIS A-40	Monitor, Alarm, View	1
WEBVIEW-M	DIRIS G-30	Monitor, View	32
	DIRIS G-50	Monitor, Alarm, View,	32
WEBVIEW-L	DIRIS Digiware D-70	Monitor, Alarm, View, Represent	32
	DATALOG H80/H81	Monitor, Alarm, View, Represent	100/200

Functions

Monitor

- Automatic detection of connected devices.
- Summary of the parameters measured for the electrical network and loads.
- Display of voltage, current, power, power factor, total harmonic distortion (THD) and harmonics per rank.
- Display of average/instantaneous values with min/max limits depending on the devices.
- Total and partial energy consumption per load.
- Input/output status.
- Synchronization of device clocks.
- Graphical or table representation.

Alarm

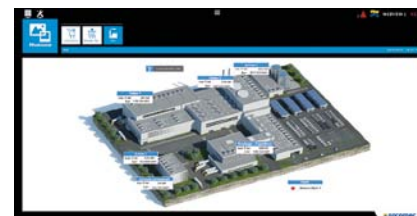
- Alarms for overloads, events and input status changes.
- Display of alarms history.
- Sorting by type, nature, criticality or state.
- Alarms displayed on the main page.
- Transmission of alarms by e-mail (SMTP).

View

- Historical measurements and consumption.
- Historical records of multiple power parameters.
- Distribution of consumption by location, by end-use and by utility (water, gas, electricity...).
- Export of consumption data in a CSV format.

Represent

- Photoview: customized synoptic of the WEBVIEW environment via the upload of graphical files (building plans, electrical circuit diagrams, production processes...)
- Real time data tracking via the insertion of parameters on the background pictures (measurement points, alarms, text...).
- Display of the mapping of the measurement plan by cascading of several images.



References

Type	Hosting	Part number
WEBVIEW-S	DIRIS A-40	4825 0501
	DIRIS Digiware D-70	4829 0202
WEBVIEW-M	DIRIS G-30	4829 0300
	DIRIS G-50	4829 0302
WEBVIEW-L 100	DATALOG H80	4854 0020
	DATALOG H81 (3G network)	4854 0021
WEBVIEW-L 200	DATALOG H80	4854 0030
	DATALOG H81 (3G network)	4854 0031